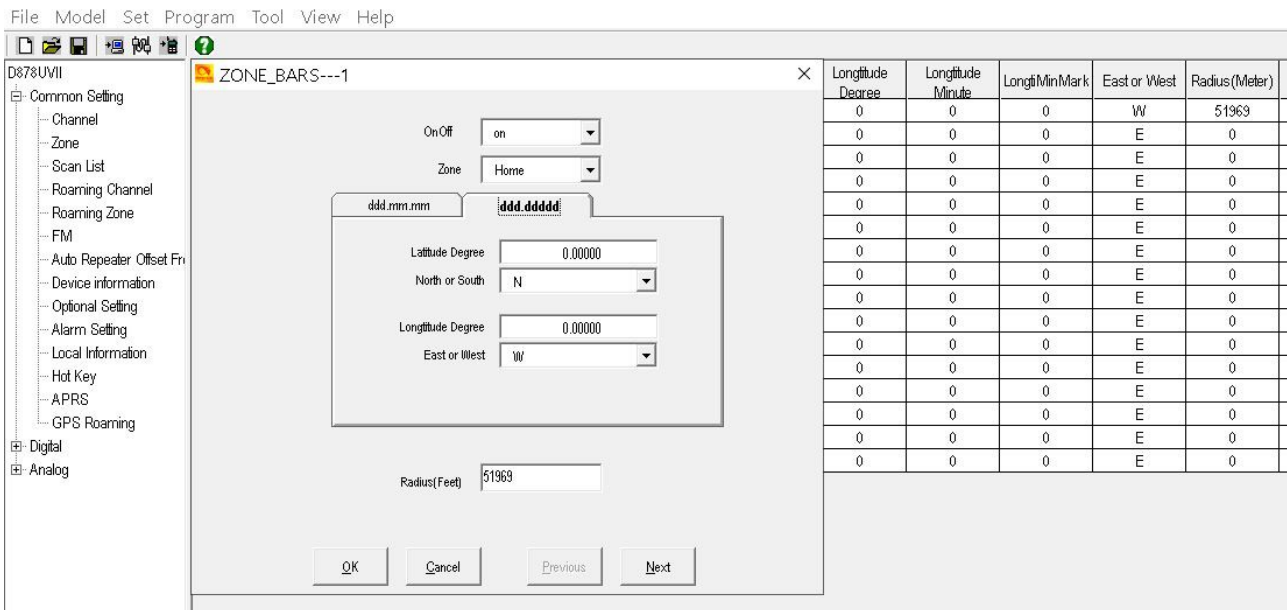


GPS Roaming v1



On/OFF – set to ON

Zone – select zone you want to use

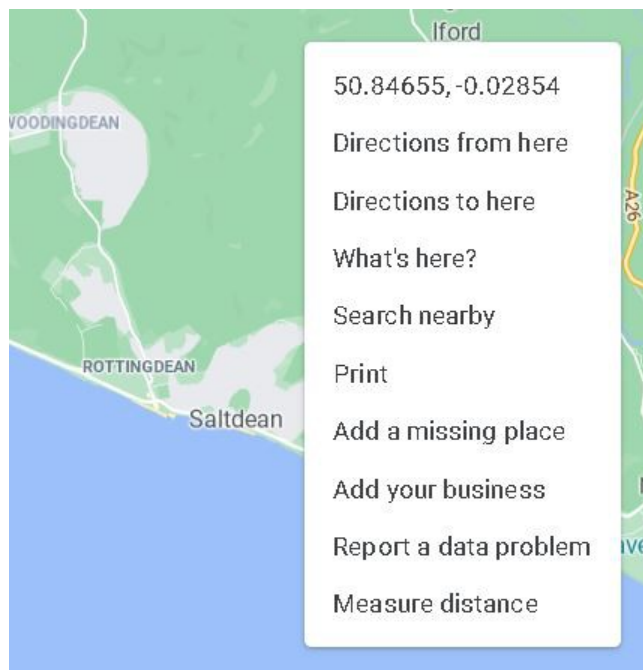
ddd.ddddd – set Lat and Long (ddd.mmm.mmm will auto fill)

Radios – When within range it will swap zone

To find Latitude and Longitude

<https://www.google.co.uk/maps/>

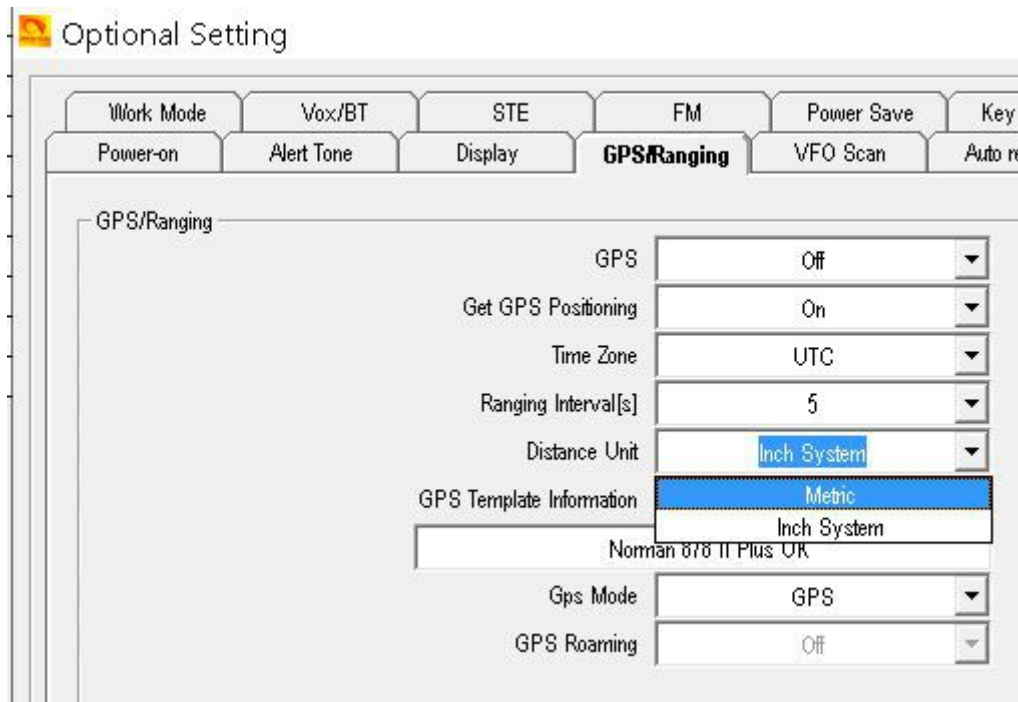
Find location on map and right click. You will see the info at the top of the new box.



To set Radios to Feet or Meters.

CPS – Options – GPS/Ranging – Distance units

Set as **Inch System** or **Metric**



Some Radios calculators.

Radios Miles to Meters <https://www.google.com/search?q=miles+to+meters>

Radios Miles to Feet <https://www.google.com/search?q=miles+to+feet>

Radio via menu.

Turn on GPS

Turn on GPS Roaming

When within range the radio will move to what you have as Default in each Zone



<http://tiny.cc/Anytone-DMR>