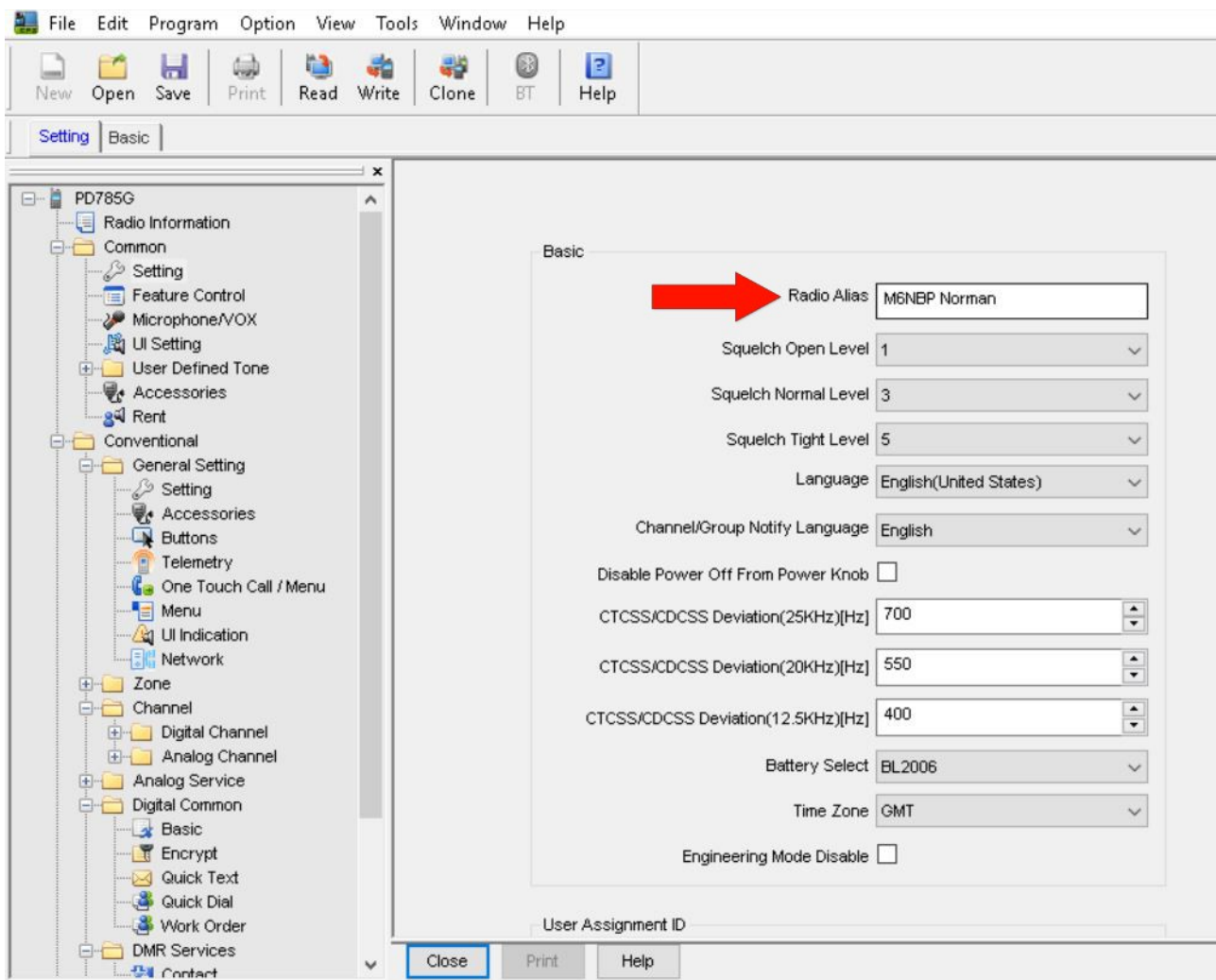


Hytera can send “Radio Alias” to other Hytera Radios

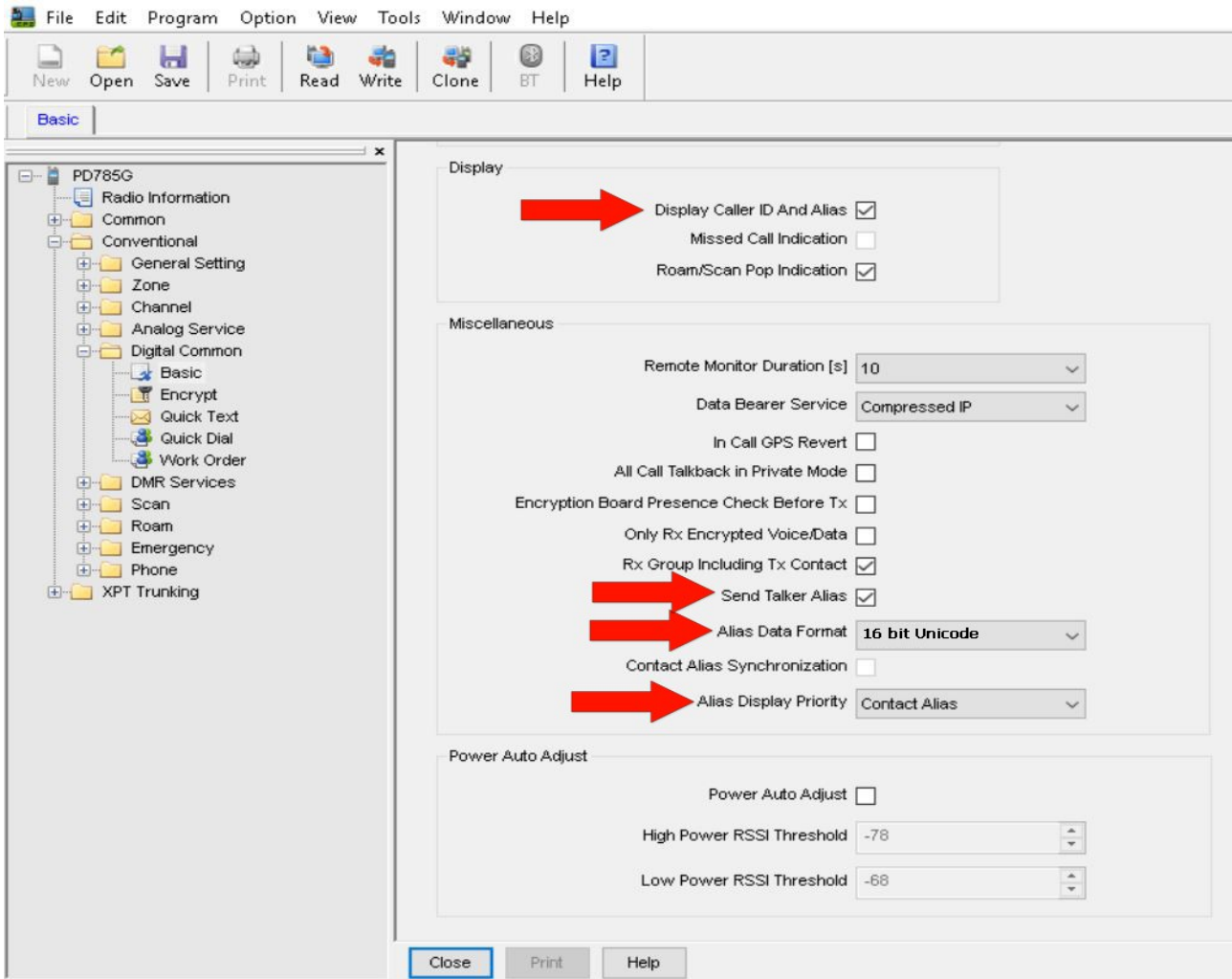
This will send your Alias to all other Hytera Radios with the updated Firmware. Your Alias will be displayed even if your not added to their Contact List.

1st You will need Hytera V8 Firmware and CPS
(Am not going to cover Firmware updates in this document)

2nd Under - Common – Settings add your Radio Alias



3rd Under - Conventional – Digital Common – Basic
Tick – Display Caller ID and Alias
Tick – Send Talker Alias
Alias Data Format – Set to **16 bit Unicode** (See Last Page)
Alias Display Priority – Set to Contact Alias



Alias Data Format – See last page

Alias Data Format

• 7-bit coded format:

-

One talker alias LC header PDU (Data Length= \leq 7 Characters);

-

One talker alias LC header PDU plus one talker alias LC Block PDU(15 Characters \geq Data Length $>$ 7 Characters);

-

One talker alias LC header PDU plus two talker alias LC Block PDUs(23 Characters \geq Data Length $>$ 15 Characters);

-

One talker alias LC header PDU plus three talker alias LC Block PDUs(31 Characters \geq Data Length $>$ 23 Characters);

• 8-bit coded format:

-

One talker alias LC header PDU (Data Length= \leq 6 Characters);

-

One talker alias LC header PDU plus one talker alias LC Block PDU(13 Characters \geq Data Length $>$ 6 Characters);

-

One talker alias LC header PDU plus two talker alias LC Block PDUs(20 Characters \geq Data Length $>$ 13 Characters);

-

One talker alias LC header PDU plus three talker alias LC Block PDUs(27 Characters \geq Data Length $>$ 20 Characters);

• 16-bit coded format:

-

One talker alias LC header PDU (Data Length= \leq 3 Characters);

-

One talker alias LC header PDU plus one talker alias LC Block PDU(6 Characters \geq Data Length $>$ 3 Characters);

-

One talker alias LC header PDU plus two talker alias LC Block PDUs(10 Characters \geq Data Length $>$ 6 Characters);

-

One talker alias LC header PDU plus three talker alias LC Block PDUs(13 Characters \geq Data Length $>$ 10 Characters)