

# Hytera GPS / APRS settings on BM via a DV device

## Hytera GPS Configuration

The following instructions are for configuring the Hytera GPS models of radio to allow the GPS position to be manually beamed and checked on <http://aprs.fi>

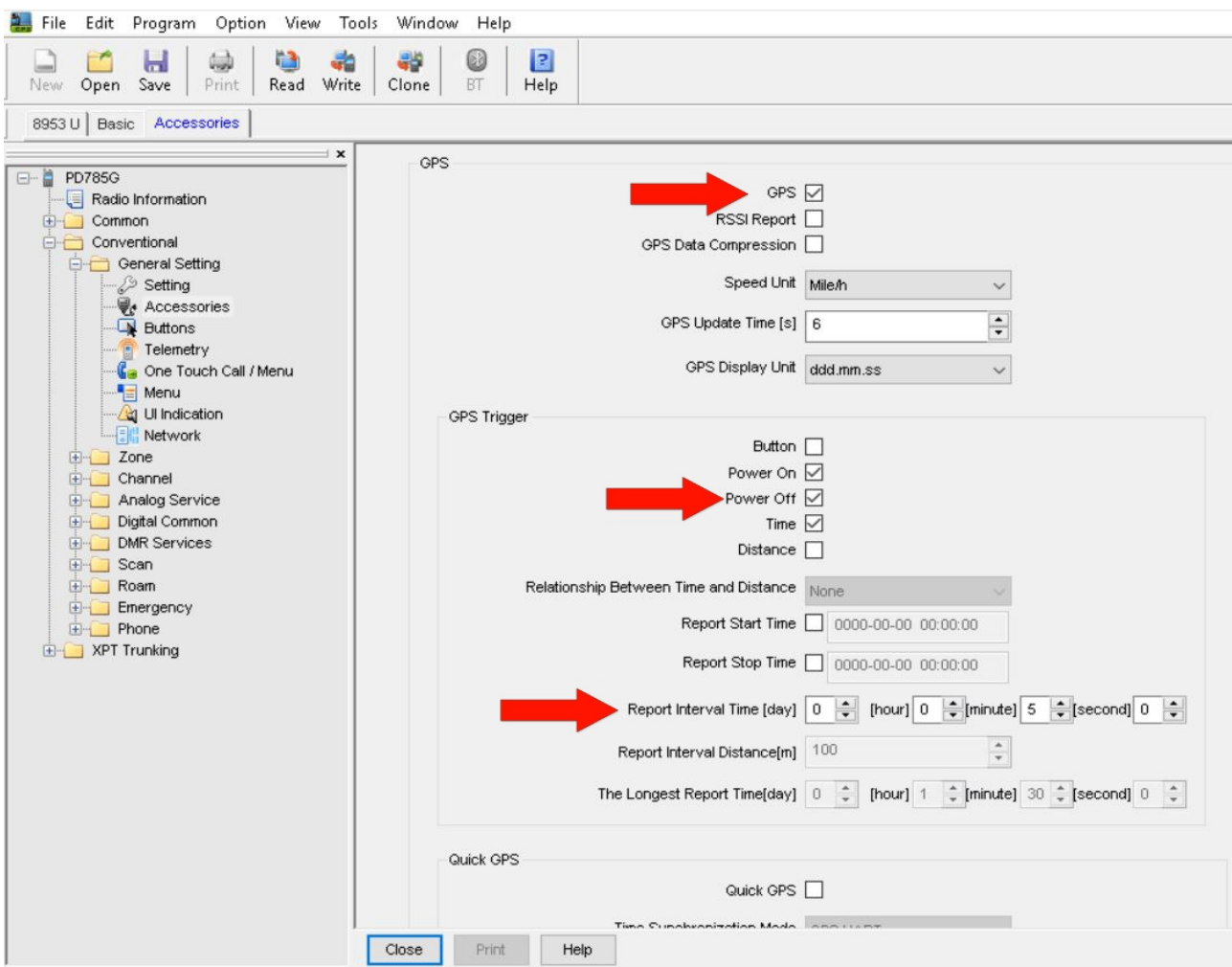
You use the Hytera CPS Software to configure the GPS settings.

### Step 1

In Conventional, Accessories, and GPS enter a tick to select.

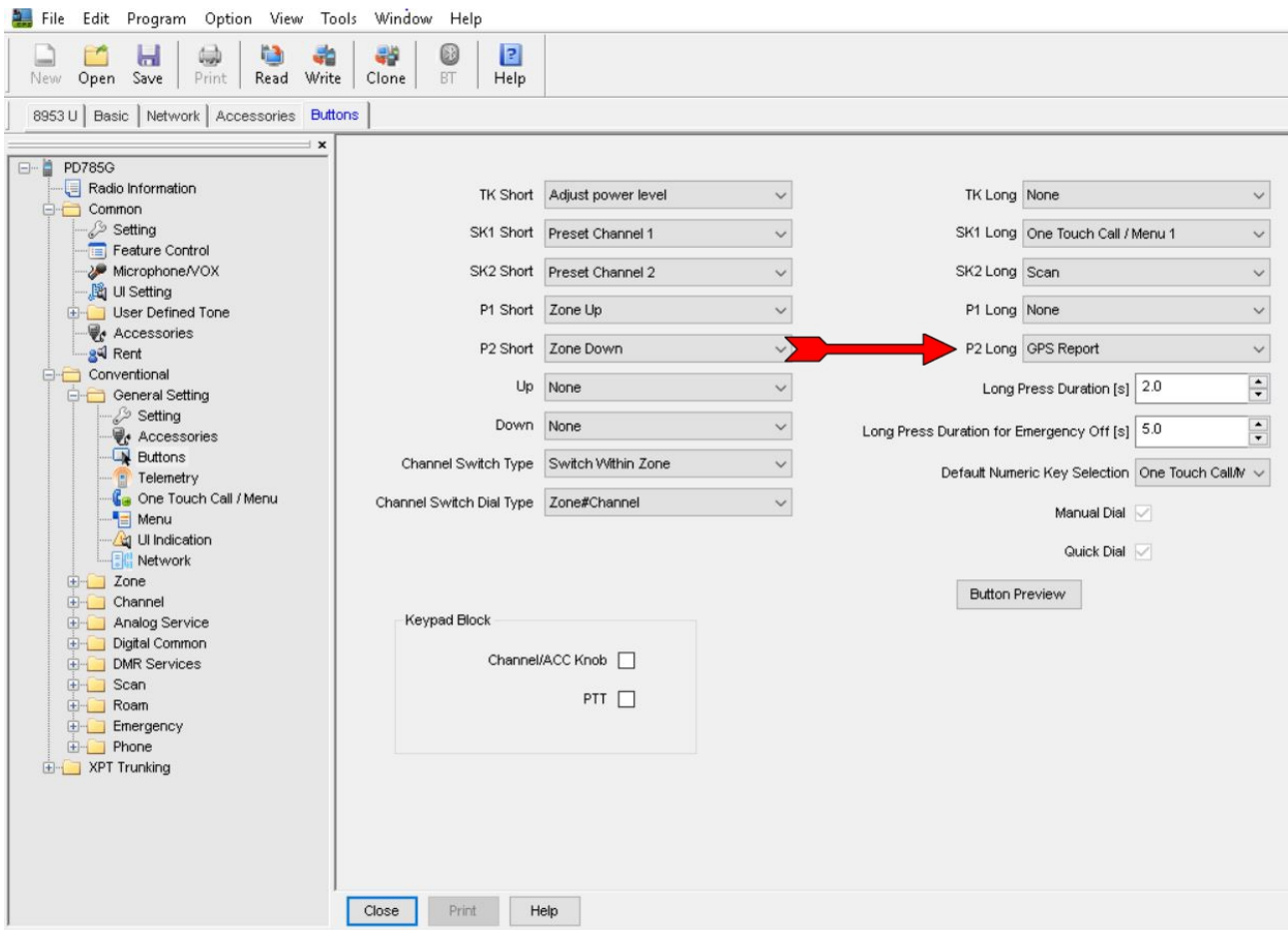
In Conventional, Accessories, and GPS Data Compression, ensure this is unchecked.

To prevent your GPS position being beamed over the network ensure this is not ticked in Conventional, Accessories, and Quick GPS.



## Step 2

In Conventional, Accessories, and GPS Trigger choose the Button option so that your GPS Position is only beacons when the programmed button is pressed.



## Step 3

Setup the GPS setting in the Conventional, General Settings, Network, Radio Services and in the RRS & GPS Radio ID which you should enter the numbers 5057 for UK Master or (310999 for USA Masters)

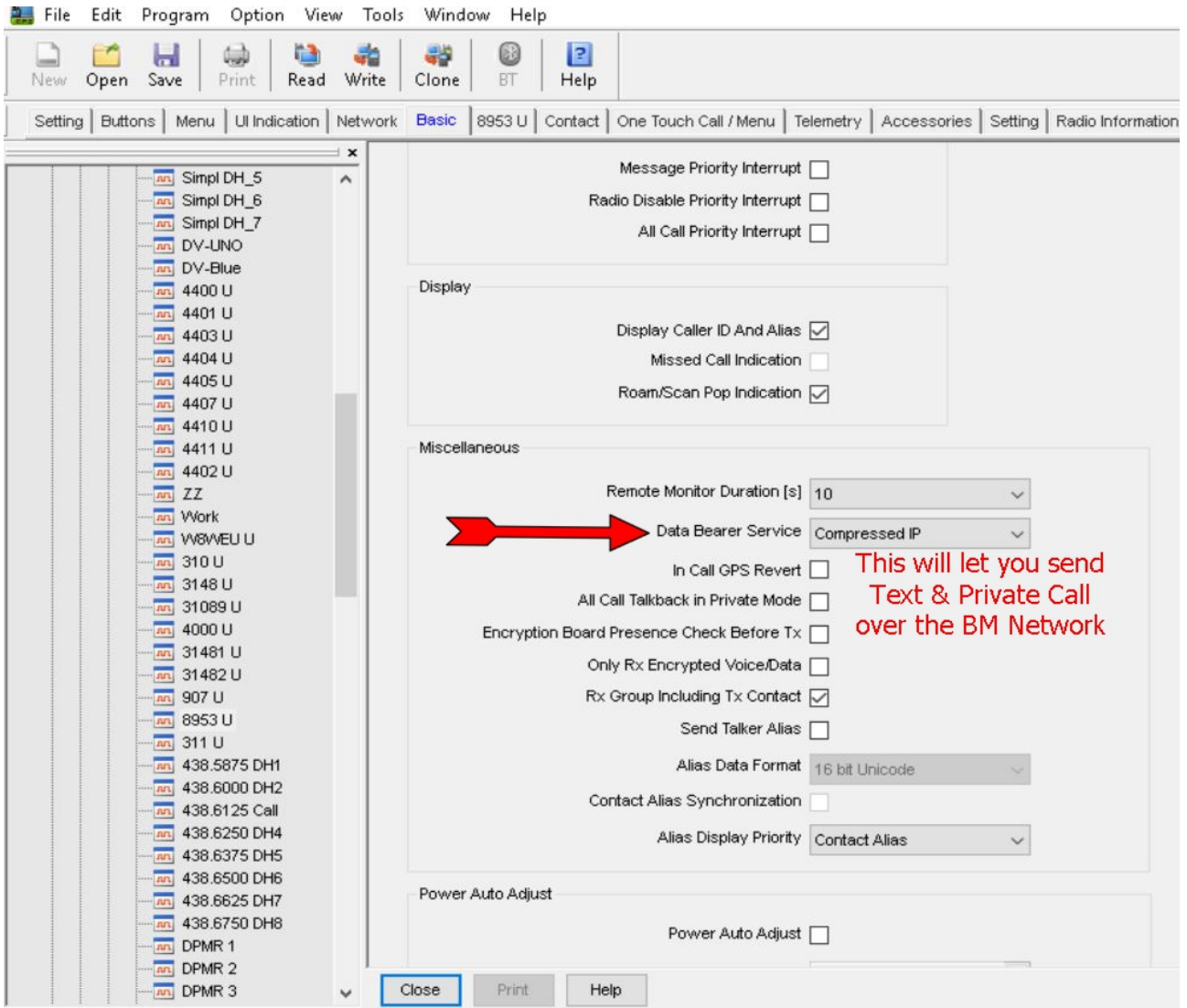
The screenshot shows the PD785G software interface with the following configuration details:

- Radio Services**
  - RRS & GPS Radio ID: 5057 (Note: 5057 for UK Master, 310999 for USA Masters)
  - RRS & GPS Radio IP: 10.0.19.193
  - RRS Port: 3002, Identifier: 115
  - GPS Port: 3003, Identifier: 116
  - TMS Port: 3004
  - RCP Port: 3005, Identifier: 119
  - Telemetry Port: 3006, Identifier: 117
  - Data Transfer Port: 3007, Identifier: 118
  - Self-Defined Message Port: 3009, Identifier: 120
  - Beacon Interval[s]: 60
- RRS Service**
  - RRS Delay Registration Time[s]: 10
  - RRS Registration Retry Counter: 5
  - RRS Registration Retry Interval[s]: 60

At the bottom of the window are buttons for Close, Print, and Help.

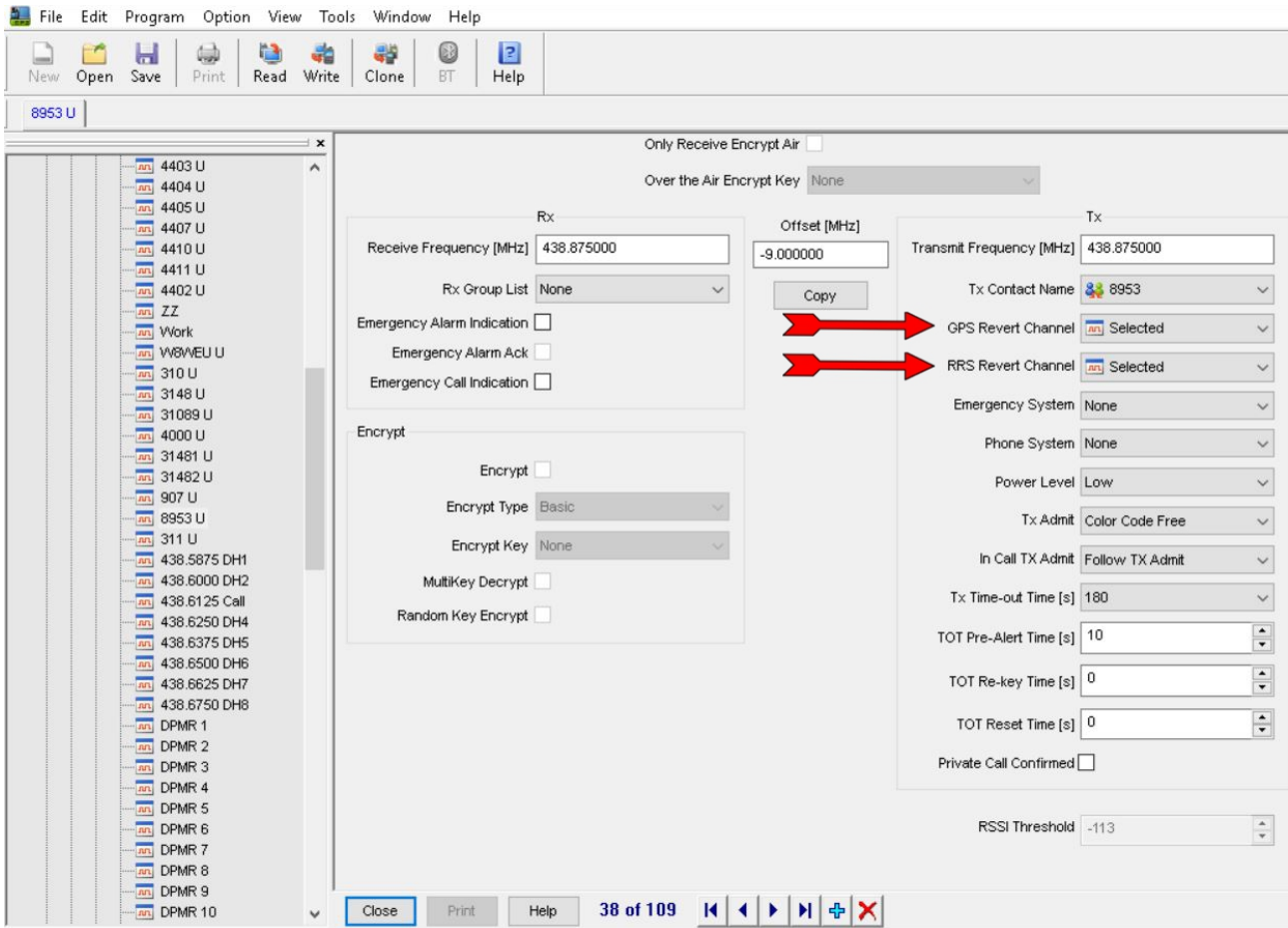
## Step 4

You now need to set the Data Bearer Services which can be found under the Conventional, Digital Common, Basic menu. In the Miscellaneous section you will find the Data Bearer Service which you must select as “COMPRESSED IP”



## Step 5

There is two fields in each memory channel – the GPS REVERT CHANNEL and the RRS REVERT CHANNEL. Select the option SELECTED in these two fields for each channel.



## Step 6

Brandmeister [SelfCare settings](#)  
Set Brand option to Hytera (With in call GPS).  
Set APRS Callsign to xxxxx-9  
Set APRS Icon  
If you do not have an account make one up.

## Step 7

After installing the updated code plug.  
Select the channel with the GPS and press GPS Trigger Button.