

# Change Mode 868–878–578–6X2

Doing this Mod Can/Will void your warranty.

Download this [software](#) and un-Zip with ( [7-Zip](#) – [Video 1](#) – [Video 2](#) )

***Software requires Windows 7 or higher***

Open the software by double clicking on the - AT\_Options.exe -

Anytone Options

Band Select  
 Full Test Mode  
 Chinese

Area Code

Manufacture Code

Radio Type

Band Setting Password

Frequency

Program Password

Serial Number

Production Date

Maintenance Date

Maintenance Description

Com Port

Read

Exit

Dealer Information

Dealer Code

Stock Date

Sell Date

Seller

Plug radio into Computer.

Set Com Port.

Then Click – **Read**.

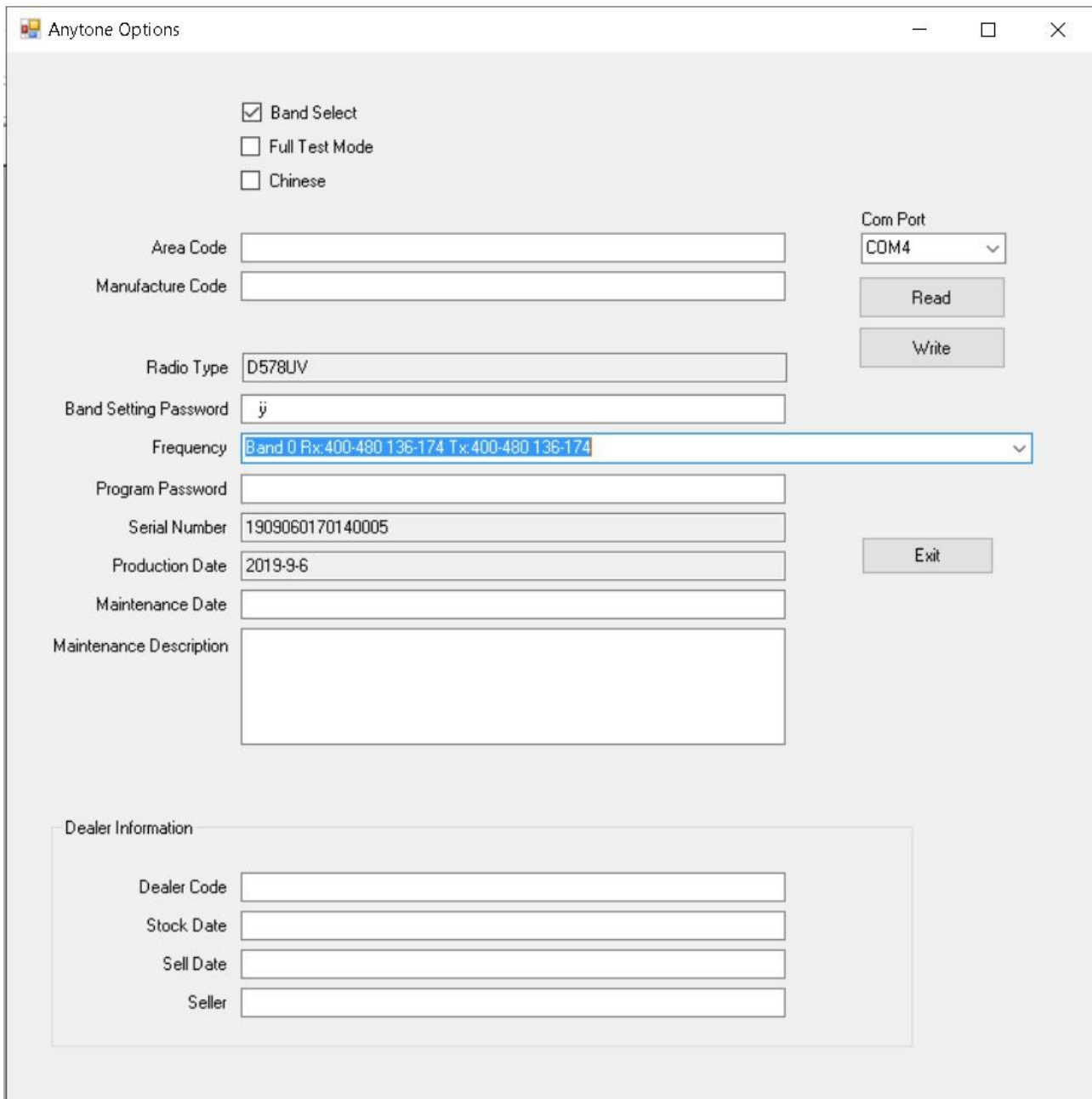
The radio will send info and reboot.  
The info for that radio is now in the software.

Go to Frequency and you will see what your radio default is.

### UK we want to change to Band 0

Use the pull down to select the band you want.

Now **Write** back to radio.



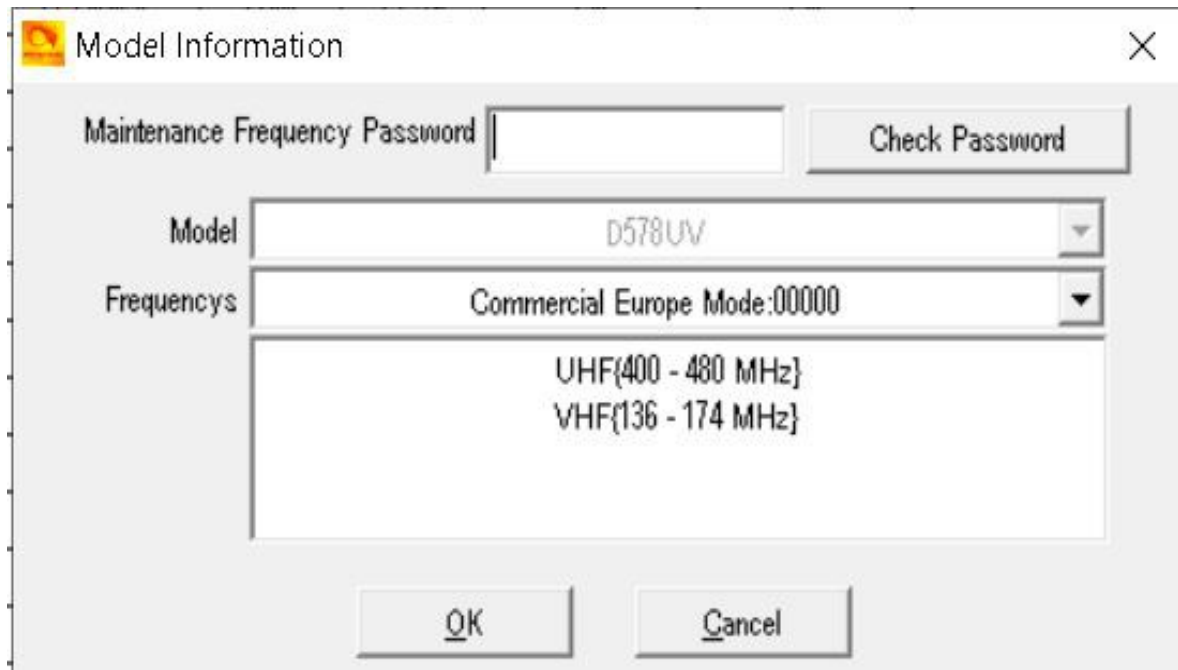
The screenshot shows the 'Anytone Options' software window. It contains several configuration fields and buttons:

- Band Select
- Full Test Mode
- Chinese
- Area Code:
- Manufacture Code:
- Radio Type:
- Band Setting Password:
- Frequency:  (highlighted)
- Program Password:
- Serial Number:
- Production Date:
- Maintenance Date:
- Maintenance Description:
- Com Port:  (dropdown)
- Buttons: Read, Write, Exit
- Dealer Information section:
  - Dealer Code:
  - Stock Date:
  - Sell Date:
  - Seller:

Next

In the CPS – Model – Model Information

Make sure the Band displayed matches the same as you have now set the Radio to.



Options

1. Read the radio to the CPS and build your codeplug.
2. Via [Import CSV](#) rebuild your codeplug.

Remember to save this as your working Codeplug.

That is it.

<http://tiny.cc/AnytoneDMR>