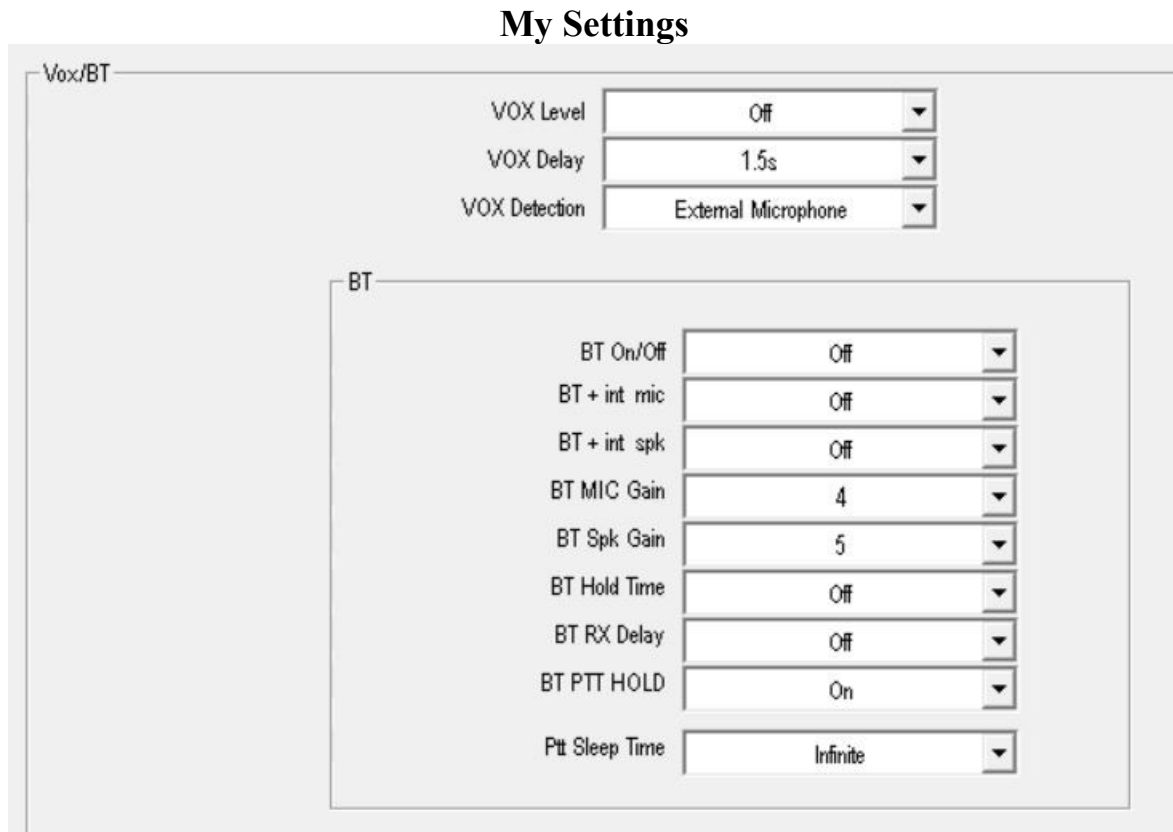
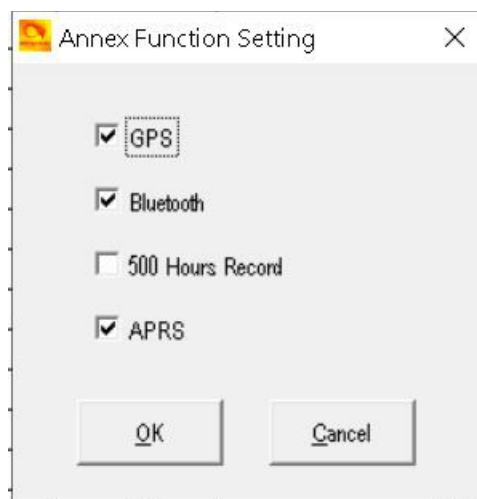


BT PTT Settings 878 - 578

878 - CPS – Option Settings – Vox/BT



(If BT is not showing you need to go to CPS – Tool – Options – and tick the box)



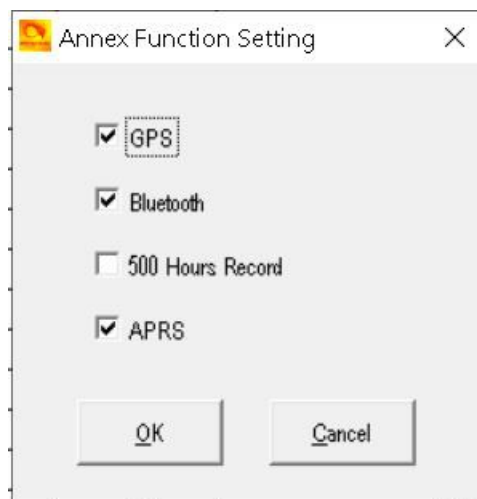
For single click to open the PTT and single click to close PTT
Make sure you have – **BTT PTT HOLD** – set to ON.

578 - CPS – Option Settings – Bluetooth

My Settings

Bluetooth	
BT On/Off	Off
BT + int mic	Off
BT + int spk	Off
BT MIC Gain	3
BT Spk Gain	4
BT Hold Time	Off
BT Ptt Hold	On
BT Ptt Sleep Time	4min
BT RX Delay	Off

(If BT is not showing you need to go to CPS – Tool – Options – and tick the box)



For single click to open the PTT and single click to close PTT
Make sure you have – **BTT PTT HOLD** – set to ON.

Sorry to say at this time – **BT Ptt Sleep Time** – can only have a max off 4mins.
We have requested Infinity, the same as the 878

BT PTT keep dropping connection.

After you have paired and turned Bluetooth ON in the radio.

Turn radio off.

Hold the BT PTT in.

Turn radio on and wait till the BT PTT connects and then you can let go off the PTT.

You should do this every time you wish to use BT.

Video - [Ultimate Anytone Bluetooth guide!](#)

<http://tiny.cc/AnytoneDMR>